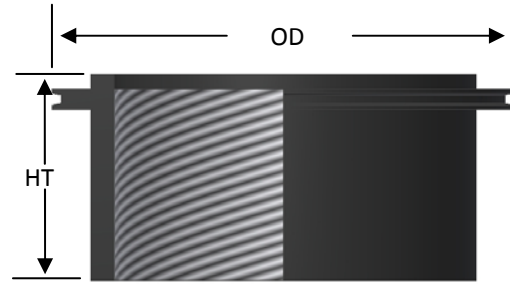


Hockey Puck Elements

3 - 250 SCFM Flow Range



Features

- High grade filter element
- Element construction of injection molded santoprene
- Integrated gasket seal
 - Positive seal between housing hemispheres
 - New seal with each element
 - Minimizes parts
- Optimal surface area per given size
- Pleated media for high dirt holding capacity

Technical Specifications

- Temp (continuous): min -26°F (-15°C), max 220°F (104°C)
- Filter change out differential: 15-20" H₂O over initial Δ P

Options

- Multiple configurations: elliptical, round, special shapes
- Molding materials: PVC, Urethane

Polyester Media Benefits

- 99%+ removal efficiency standard to 25 micron
- Washable with lukewarm water & mild detergent
- Less maintenance due to longer durability
- Moisture resistant
- Handles hot air and oil mist from unload cycle of reciprocating/piston compressor

Paper Media Benefits

- 99%+ removal efficiency standard to 2 micron
- Heavy duty industrial strength paper
- Higher efficiency than many alternative media
- Cost effective

Replacement Element Sizes

| Element Part Number | | Element SCFM Rating | Surface Area ft ² | Dimensions - inches | |
|---------------------|-------|------------------------|---------------------------------|---------------------|-------|
| Polyester | Paper | | | OD | HT |
| 03 | 02 | 3 | 0.1 | 1 1/2 | 1 |
| 05 | 04 | 8 | 0.2 | 2 1/4 | 1 |
| 07 | 06 | 12 | 0.58 | 3 | 1 3/8 |
| 11 | 10 | 35 | 1.1 | 4 | 1 3/8 |
| 17 | 16 | 250 | 8 | 8 | 3 1/4 |

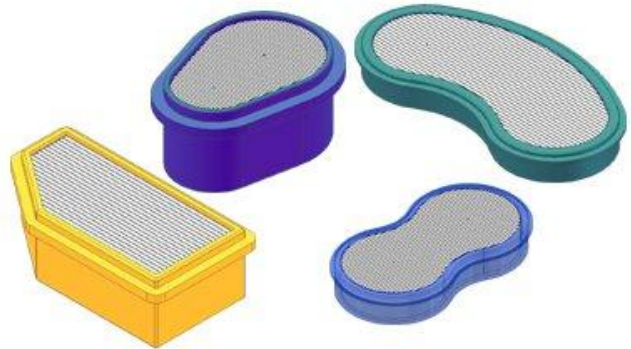
See Element Technical Data section for maintenance guidelines

Tidbit: Charlie Solberg Jr. created a patented process to manufacture our Hockey Puck Style Filter Elements.

Note: Model offerings and design parameters may change without notice. See www.solbergmfg.com for most current offering.

Custom Configurations For Hockey Puck Style Elements

- Contact Solberg for custom configurations that fit your equipment or application
- High grade filter element
- Multiple molding material options
- Integrated gasket seal
- Tooling and production minimums may apply



Sample Configurations

Applications

- Small engines
- Industrial equipment
- Vacuum cleaners
- DIY equipment
- Contact Solberg about your unique application

Disposable Filter Elements

AKG Series “Slip Fit” Elements

Features

- Molded plastisol slip-fit connection
- Less maintenance with disposable element
- Pleated media for high dirt holding capacity



Technical Specifications

- Temp (continuous): min -26°F (-15°C), max 220°F (104°C)
- Filter change out differential: 15-20” H₂O over initial Δ P
- Polyester: 99%+ removal efficiency standard to 5 micron
- Paper: 99%+ removal efficiency standard to 2 micron

Note: Model offerings and design parameters may change without notice. See www.solbergmfg.com for most current offering.