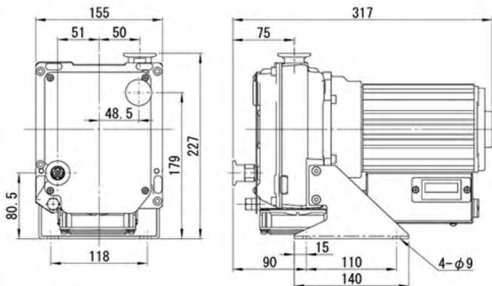
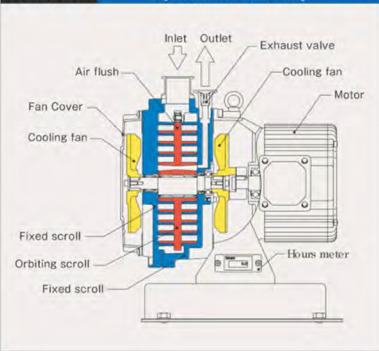




#### TECHNICAL DATA

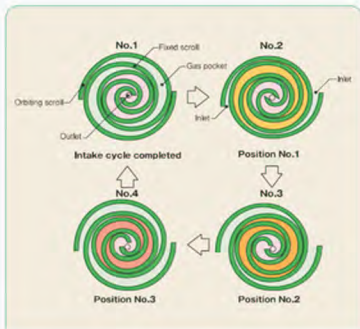
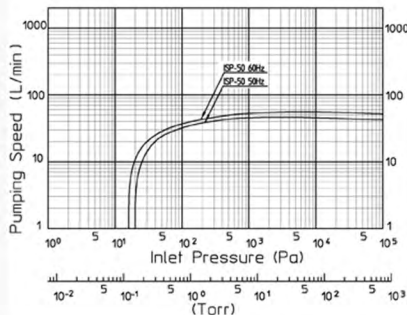
DISPLACEMENT L/Min(60hz) - 60  
ULTIMATE PRESSURE - Pa -  $1.1 \times 10^{-1}$   
MOTOR POWER - W - 100  
NOISE LEVEL - dB(A) - 48  
COOLING SYSTEM - Air Cooled  
INLET CONNECTION - NW25  
OUTLET CONNECTION - NW16  
WEIGHT - (kg) - 12

*We Can Rebuild & Service your ISP-50.*



## ISP APPLICATIONS

- SPUTTERING EQUIPMENT
- SYNCHROTRON RADIATION
- SURFACE MODIFICATION
- ELECTRON BEAM PROCESS
- GAS RECOVERY DEVICES
- VACUUM EQUIPMENT
- LEAK DETECTORS
- DEVICE HANDLING SYSTEM
- LABORATORY USE



*We Can Rebuild & Service your ISP-50.*



**ANEST IWATA**  
**Scroll Meister ISP-50 Dry Scroll Pump**

**SALES & SERVICE 1-973-249-0854**

