



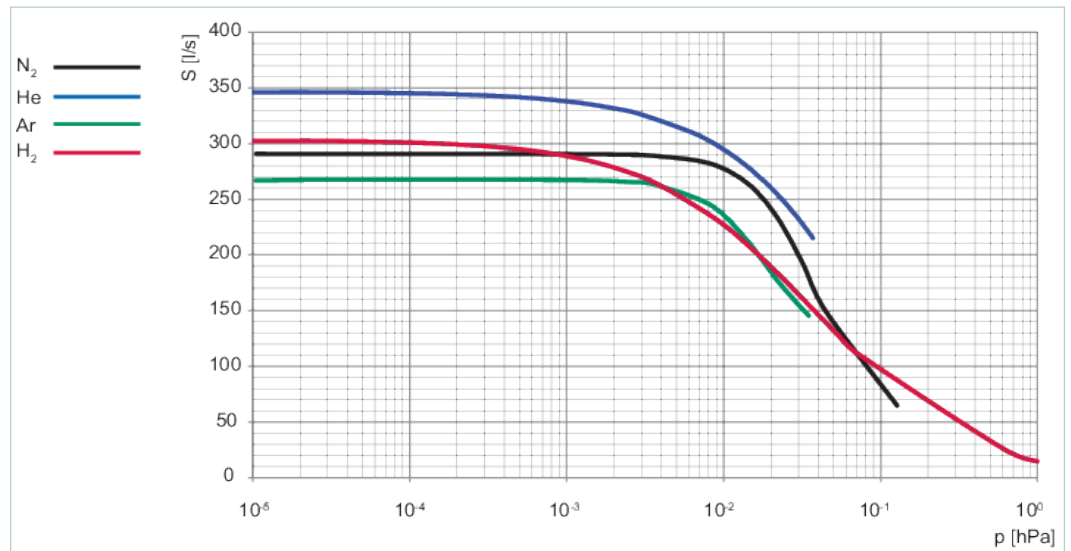
HiPace[®] 350 with TC 400, DN 100 ISO-K



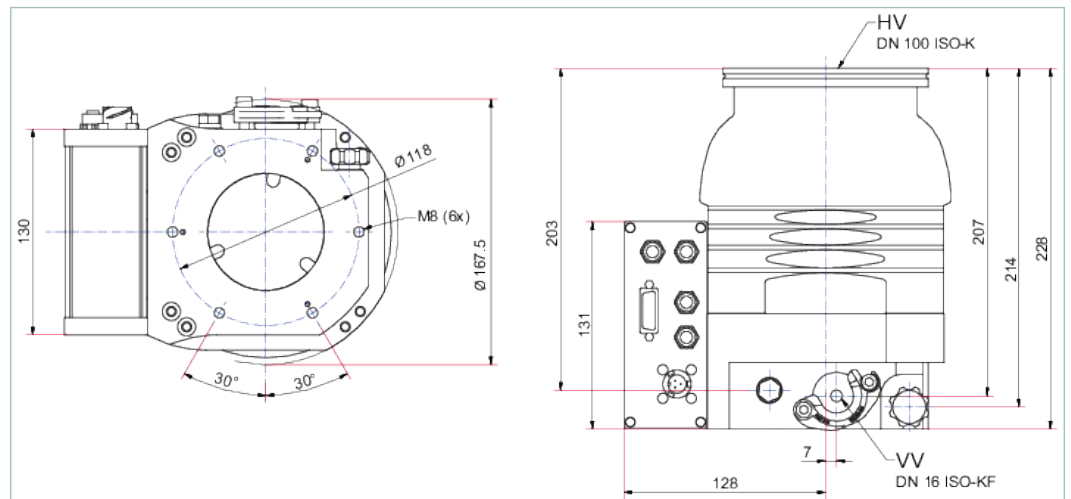
Similar Image

HiFace® 350 with TC 400, DN 100 ISO-K

- Robust, high-performance turbopump with a pumping speed of up to 300 l/s for N₂
- Compact and powerful
- Exceptional pumping speed for light gases
- Laser balancing technology
- For installation in any orientation
- Integrated drive electronics TC 400
- Extensive accessories expand the range of applications



Dimensions



Technical Data

HiFace® 350 with TC 400, DN 100 ISO-K

Bearing	Hybrid
Compression ratio for Ar	$> 1 \cdot 10^{11}$
Compression ratio for H ₂	$2 \cdot 10^6$
Compression ratio for He	$> 1 \cdot 10^8$
Compression ratio for N ₂	$> 1 \cdot 10^{11}$
Connection flange (in)	DN 100 ISO-K
Connection flange (out)	DN 16 ISO-KF / G 3/8"
Cooling method	Natural convection

Technical Data	HiPace® 350 with TC 400, DN 100 ISO-K
Cooling method, optional	Water Air (forced convection)
Cooling water flow	100 l/h
Cooling water temperature	15-25 °C 59-77 °F 288-298 K
Current, max.	12,5 A
Electronic drive unit	TC 400
Final pressure	1 · 10 ⁻⁷ hPa 7.5 · 10 ⁻⁸ Torr 1 · 10 ⁻⁷ mbar
Fore-vacuum max. for N ₂	10 mbar
Gas throughput at final rotation speed for Ar	0.7 mbar l/s
Gas throughput at final rotation speed for H ₂	11 mbar l/s
Gas throughput at final rotation speed for He	7 mbar l/s
Gas throughput at final rotation speed for N ₂	2 mbar l/s
I/O interfaces	RS-485, Remote
Input voltage(s)	24 V DC (±10 %)
Integral leak rate	1 · 10 ⁻⁷ mbar l/s
Mains frequency compatibility	50 Hz 60 Hz
Mounting orientation	Arbitrary
Permissible axial magnetic field max.	20 mT
Permissible radial magnetic field max.	4.5 mT
Position of power supply pack	External power supply pack
Power consumption max.	300 W
Protection degree	IP54 Type 12
Pumping speed for Ar	270 l/s
Pumping speed for H ₂	300 l/s
Pumping speed for He	350 l/s
Pumping speed for N ₂	300 l/s
Rotation speed ± 2 %	66,000 rpm 66,000 min ⁻¹
Rotation speed variable	60 – 100 %
Run-up time	4 min
Sound pressure level	≤50 dB(A)
Type of electronic drive unit installation	Integrated electronic drive unit
Venting connection	G 1/8"
Weight	7.8 kg 17.2 lb

Order number	
HiPace® 350	PM P070 401 40

Accessories	
Connections Connection kits for mounting of pumps	
Connection kit for mounting of pumps, DN 16 ISO-KF	120SWS016-1000
Control Devices Power supplies and control displays	
OmniControl 001, rack unit without integrated power supply pack	PE D42 100 0
OmniControl 001 Mobile, control units	PE D22 000 0
OmniControl 300, rack unit with integrated power supply pack	PE D62 110 0
OmniControl 300, table unit with integrated power supply pack	PE E62 110 0
Cooling Air cooling	
Air cooling, shielded, for HiPace 350/450 with TC 400 and TCP 350	PM Z01 374
Cooling Water cooling	
Water cooling for HiPace 60 P / 80 / 350 / 450 and for SplitFlow 50 / 80 with push-in fitting, 8 mm	PM 016 623 -T
Water cooling for HiPace 350 HiPace 400 HiPace 450 HiPace 700 HiPace 800 with push-in fitting 8 mm	PM 026 068 -T
Monitoring Pressure Sensors	
OmniControl 200 mit PKR 361, 40 CF	PT 440 957 -T
Valves Isolation valves	
HV gate valve, DN 100 ISO-F, electro-pneumatic, PI (RS)/PV 24 V DC, SS/FKM	GVP-S08342

VACUUM SOLUTIONS FROM A SINGLE SOURCE

Pfeiffer Vacuum stands for innovative and custom vacuum solutions worldwide, technological perfection, competent advice and reliable service.

COMPLETE RANGE OF PRODUCTS

From a single component to complex systems:

We are the only supplier of vacuum technology that provides a complete product portfolio.

COMPETENCE IN THEORY AND PRACTICE

Benefit from our know-how and our portfolio of training opportunities!

We support you with your plant layout and provide first-class on-site service worldwide.

Are you looking for a
perfect vacuum solution?
Please contact us:

Pfeiffer Vacuum GmbH
Headquarters · Germany
T +49 6441 802-0
info@pfeiffer-vacuum.de

www.pfeiffer-vacuum.com

All data subject to change without prior notice.

PFEIFFER  **VACUUM**